

ANT95-R Series nano Motion Technology

Mechanical Bearing, Direct-Drive Rotary Stage

- High resolution (0.01 arc sec)
- High performance in large travels
- Outstanding error motion specifications
- Excellent in-position stability
- Multi-axis configurations
- High dynamic performance



The ANT95-R direct-drive rotary stages are designed as part of Aerotech's nano Motion Technology product family. Our rotary stages offer unprecedented in-position stability (0.005 arc sec) and incremental motion (0.01 arc sec) performance.

Multi-Axis Capabilities

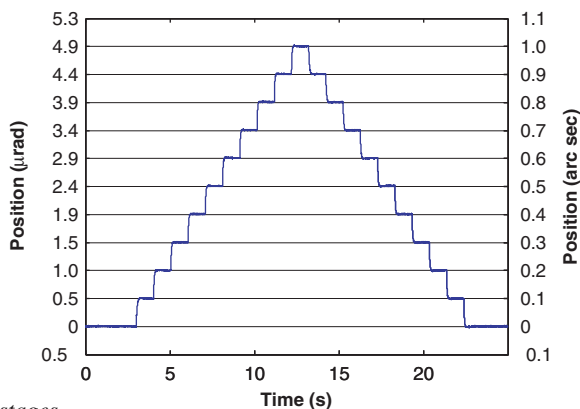
The ANT95-R series is designed for compatibility and easy integration with Aerotech's ANT linear stage product offerings. Together these stages provide accuracy, stability, and small size performance capability for almost any nano-manufacturing or inspection application.

Dynamic Performance

In addition to the high precision levels, these systems offer high dynamic performance and throughput ideal for disk drive manufacture and test.

Durability

The ANT95-R stage series was designed to operate in a 24/7 manufacturing environment. Unlike other rotary devices, the ANT95-R requires no periodic maintenance, assuring years of trouble-free operation.



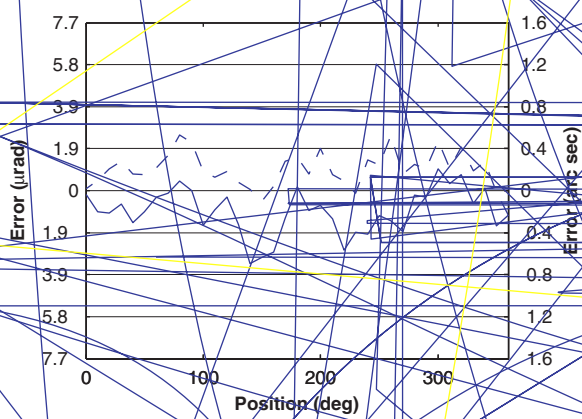
stages.

*exceptional in-position stability for large angular travel
ANT95-R 0.10 arc sec step plot. Best-in-class resolution and*

See additional
performance graphs on
the following pages.

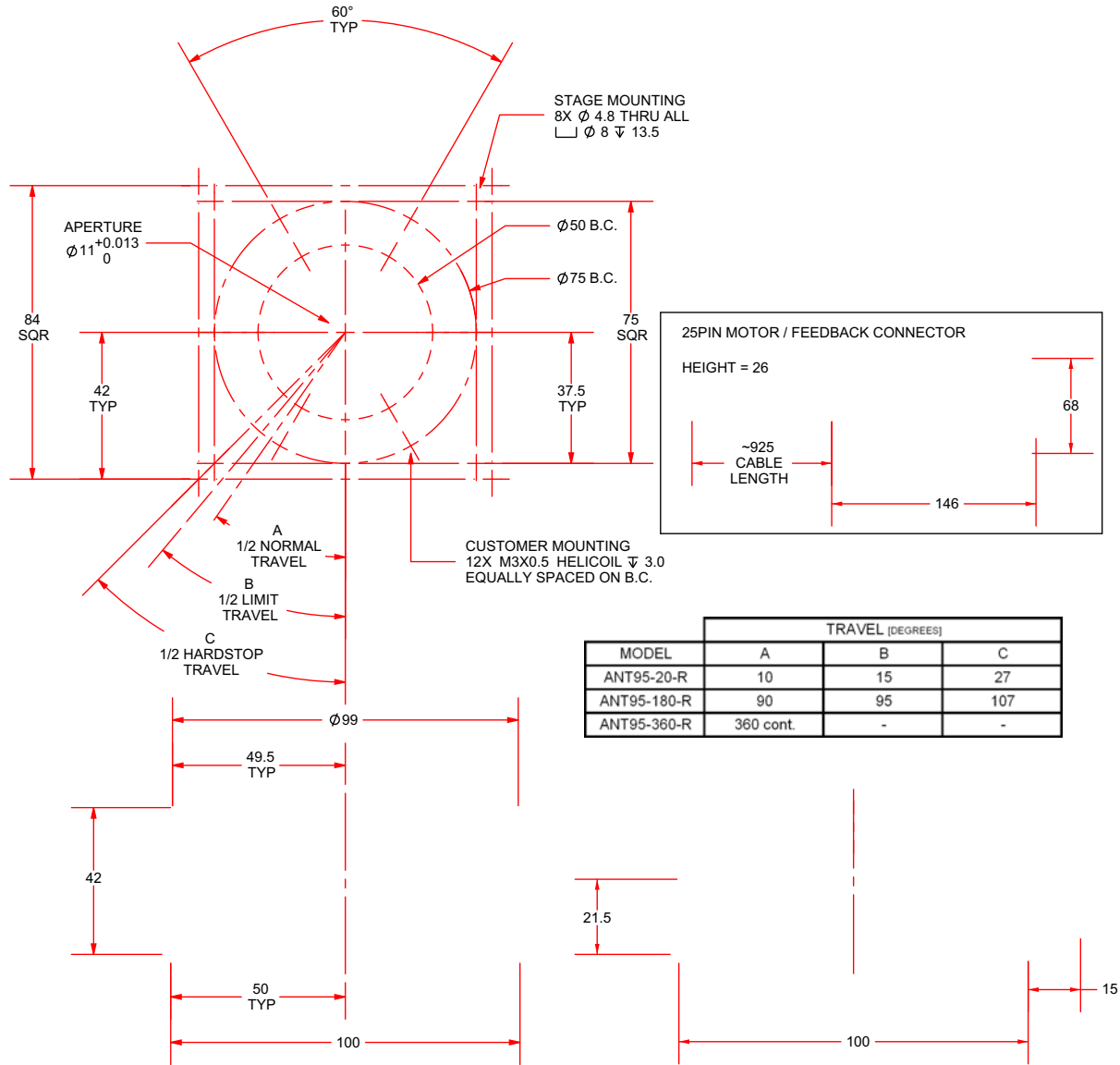


ANT95-R Series PERFORMANCE



ANT95-R accuracy plot showing excellent accuracy and bi-directional positioning capability.

ANT95-R plot showing best-in-class in-position stability.



ANT95-R Series ORDERING INFORMATION

ANT95-R Series Rotary Stage

ANT95-R Aerotech rotary positioner

Rotary Stage Travel
